

Full-Wall Anchor Company

Call: 1-800-619-0719

FULL-WALL® ANCHOR INSTALLATION MANUAL

[\(Right click here to download in printable PDF format\)](#)

[\(Requires Adobe Reader Available here\)](#)

[\(Right Click for Sales Brochure\)](#)

RECOMMENDED TOOLS: Rotary Hammer Drill

Drill Bits-1/2" and 5/8"

Shovel

2 Wrenches - 7/8", Channel Locks, Vice Grips

Reciprocating Saw (Sawzall)

Metal Saw Blades

Auger (optional)

RECOMMENDED INSTALLATION PROCEDURE

I. FIRST STEP:



- Ask homeowner if there are any known obstacles in the ground (gas, water, sewer, electrical conduits, etc.).
- To layout the job, measure 4 1/2 to 5 feet in from each corner and mark the proposed anchor placement.
- Then space the remaining anchors at 4 1/2 to 5-foot intervals.
- A typical 30-foot long wall will need 5 anchors.

>. SECOND STEP:



- For outside anchor placement, measure 8 feet off exterior wall opposite interior anchor placement and dig a hole roughly 2 1/2 feet long by 15 inches wide and 2 1/2 feet deep.

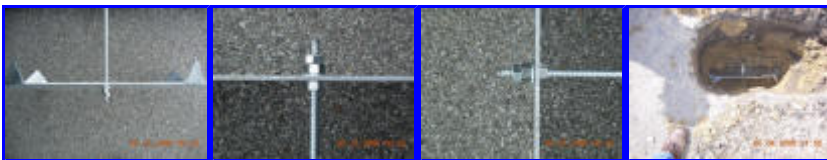
5. THIRD STEP:



- Place 7-foot interior steel plate temporarily on wall, mark where you are going to drill your hole. It must not be at the bottom of the pre-cut mounting slots-it must be approximately 1 1/2" from the top of either slot. Remove the anchor and drill hole through the wall using rotary hammer drill and 5/8" bit so that the angle of the rod meets up with the hole already dug.



Place threaded rod in the hole you drilled in the wall and with your hammer drill pound it out to the hole outside. We recommend that you put a coupler with a small piece of rod on the end so that the pounding does not tear the end of the rod. The rod should come out in the hole already dug at least 7 to 8 inches below ground surface. About 6 to 7 inches of the rod should be visible in the hole. Rod does not always come out perfect; you may have to dig a little more to the left, right or down.



Place a zinc coated nut on the rod about 3 to 4 inches and slide outside plate up to the nut with the dog-ears pointing to the wall to be anchored.

Then place a zinc coated washer followed by two zinc coated nuts on the rod and tighten all three nuts to the plate.

Fill in hole with dirt.

FOURTH STEP:



- Then place interior plate on wall with rod running through it. Put on small plate 3 inches by 11 1/4 inches, then a washer and nut.



- Before tightening the nut you will want to anchor the plate on the ground with heavy-duty anchor pins. You may anchor the plate to the footer, new concrete and/or existing concrete. You will need a 1/2 inch drill bit for your hammer drill. Make sure the bottom of the plate is against the wall.

FIFTH STEP:



- Tighten nut on interior plate with wrench. (We recommend turning wrench until you reach firm resistance, then turn 2 to 3 more full turns).
- Use a reciprocating saw (Sawz-all) to cut off the excess rod. Try to get as close to the nut as possible.
- Optional: Once rod is cut you may test the tightness of the interior nut. Use a torque wrench and tighten to 50 or 80 pounds pressure.

JOB COMPLETED IN FIVE EASY STEPS!

NON-TYPICAL SITUATIONS

- Due to certain circumstances, you may have to change the recommended 8-foot exterior plate installation.

No less than 5 feet from the foundation is recommended and pouring concrete in the hole between the plate and the front of the hole will help to make an effective anchor if using less than 8-foot installation.

For applications that require a longer than 8-foot anchor, you can use a coupler on the end of the 10-foot rod and lengthen it by 20 feet maximum.

You may also need a coupler if you must cut the 10-foot rod to accommodate a less than 10-foot wide basement.

While digging, you may run into rocks or roots and you may need a chipping hammer to break up rocks or a reciprocating saw (Sawz-all) to cut roots.

Also, when pounding rod through rocks or roots you may need to use a midsize jackhammer.

When using a coupler, keep it a few feet from the outside wall so that the coupler will not come into contact with wall when tightening.

FULL-WALL® ANCHOR SPECS.

The interior plate measures 14" x 84" and is made of heavy 10-gauge galvanized steel. There are extrusions on either side of the plate design which gives the Full-Wall® anchor additional strength and wall conformity. Pre-cut mounting slots provide ample room for rod installation and tightening. The interior plate also has a 90-degree angled base that can be fastened to a concrete floor or footer with a variety of concrete fasteners.

The outside plate measures 12" x 24" and is made of 3/16" thick hot dipped galvanized steel. The corners of the plate are "dog eared" for added grip and holding power.

These plates are connected with a 1/2" 10-foot long nickel plated rod that has special threads to resist them from being stripped and aid in penetration of the outside ground.

Zinc plated hardened washers and hex nuts are used to fasten the plates together.